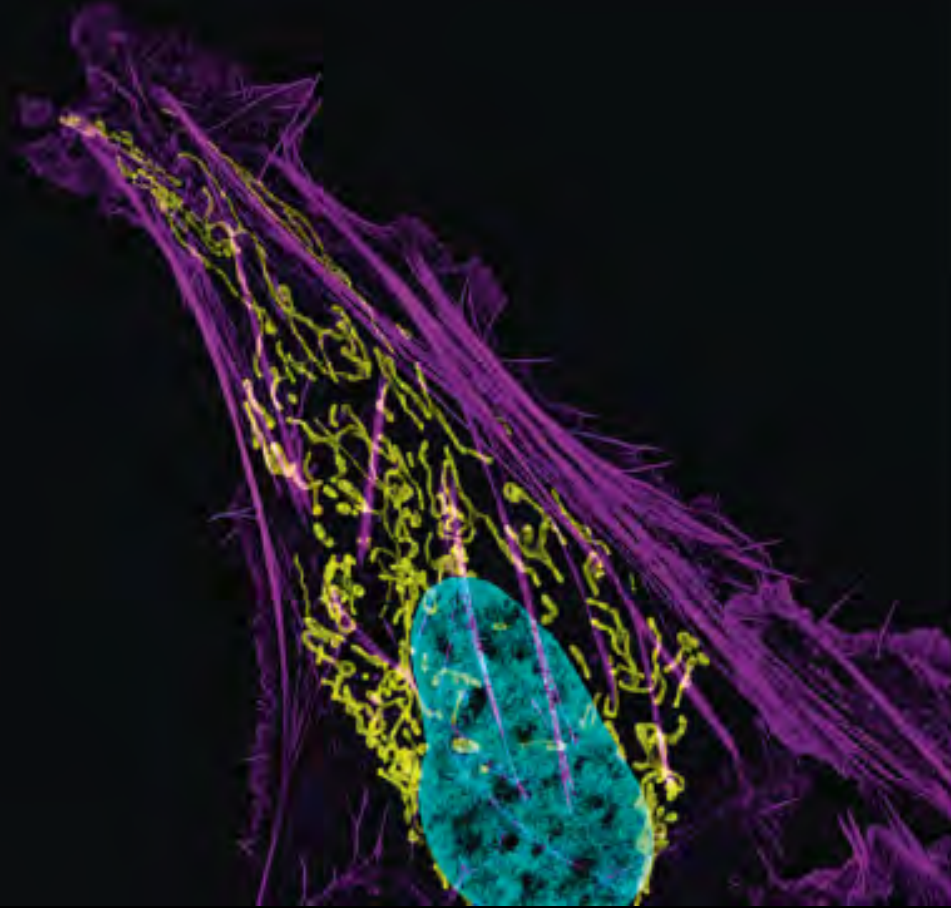


FRIEDRICH-MERZ PROFESSORSHIP 2013

INVITATION



GOETHE 
UNIVERSITÄT
FRANKFURT AM MAIN

MEMBRANE KINESIS

SHAPING AND TRANSPORT OF CELL MEMBRANES

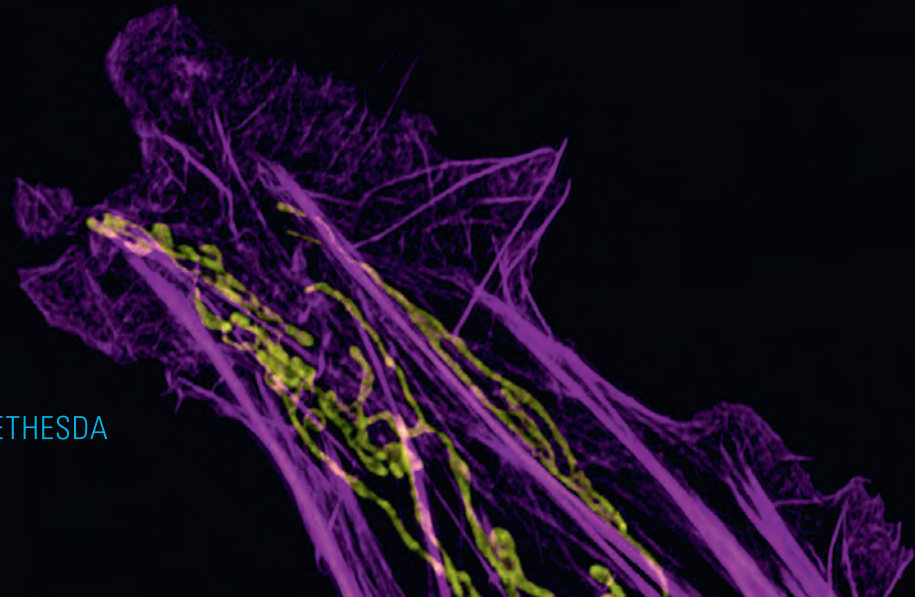
International Symposium in honor of
Dr. Jennifer Lippincott-Schwartz
Friedrich-Merz Professorship 2013

October 22, 2013

Biocenter B1, Campus Riedberg,
Goethe-University Frankfurt

SPEAKERS

Jennifer Lippincott-Schwartz BETHESDA



SPEAKERS

Jennifer Lippincott-Schwartz BETHESDA

Robert Ernst FRANKFURT

Peter Friedl NIJMEGEN

Alexander Gottschalk FRANKFURT

Volker Haucke BERLIN

Mike Heilemann FRANKFURT

Jacques Neefjes AMSTERDAM

Jacob Piehler OSNABRÜCK

Andreas Reichert FRANKFURT

Carsten Schultz HEIDELBERG

Petra Schwille MUNICH

Ernst Stelzer FRANKFURT

Antoine Triller PARIS

Horst Vogel LAUSANNE

VENUE

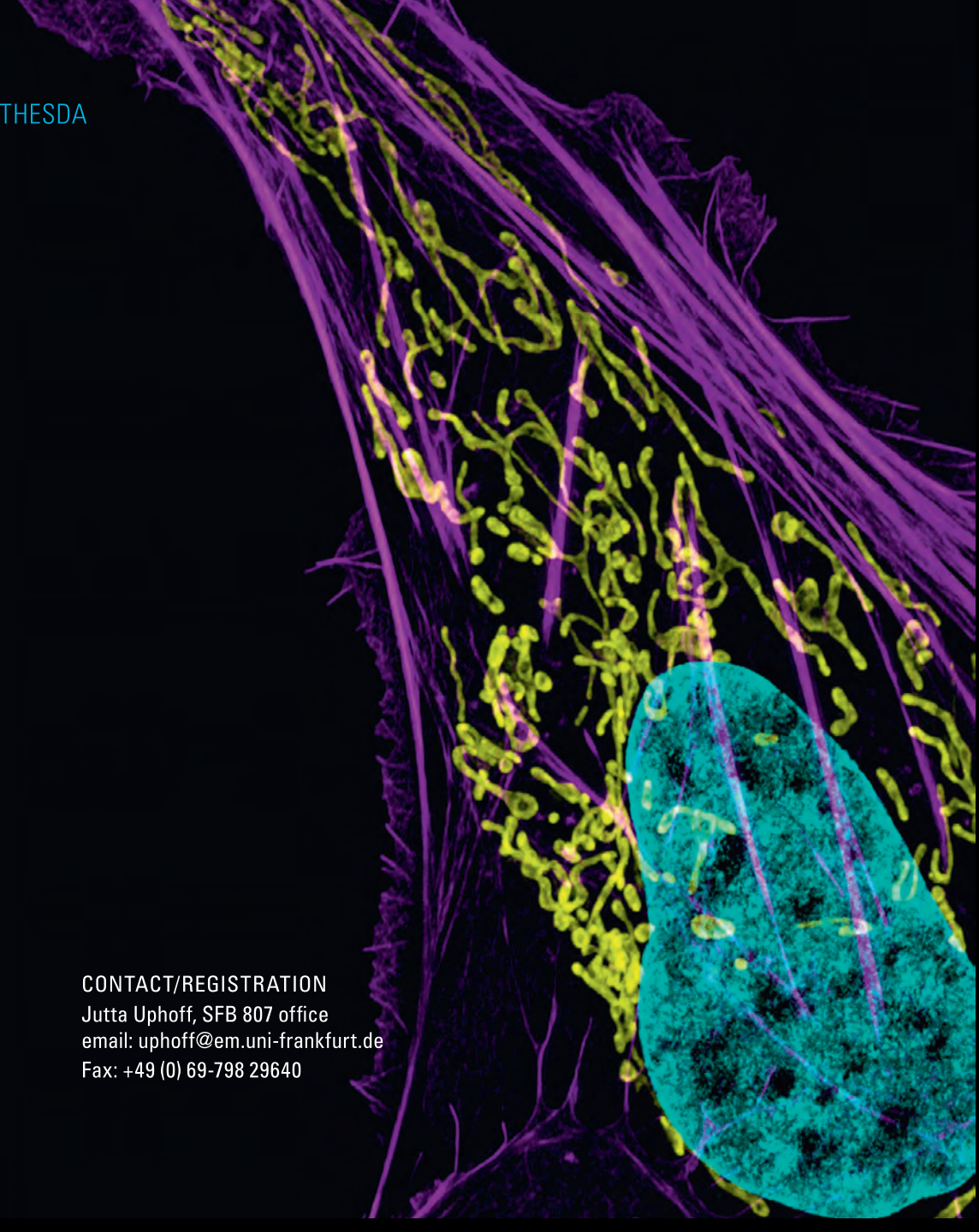
Goethe-University
Campus Riedberg
Lecture Hall B1, Biocenter
Max-von-Laue-Str. 9
60438 Frankfurt/Main

ORGANIZATION

Robert Tampé
Institute of Biochemistry

CONTACT/REGISTRATION

Jutta Uphoff, SFB 807 office
email: uphoff@em.uni-frankfurt.de
Fax: +49 (0) 69-798 29640



October 20 – 24, 2013

Friedrich-Merz Professorship 2013

STUDENT LECTURE

Looking under the hood of cells through imaging

Monday 21.10.13 | 12.00–13.00 h
Lecture Hall H5, Otto-Stern-Zentrum
Campus Riedberg

INTERNATIONAL SYMPOSIUM »MEMBRANE KINESIS – SHAPING AND TRANSPORT OF CELL MEMBRANES«

KEYNOTE OPENING LECTURE

Insights into HIV viral assembly and membrane abscission using super resolution microscopy

Tuesday 22.10.13 | 9.00–18.00 h
Lecture Hall B1, Biocenter
Campus Riedberg

STUDENT LECTURE

Navigating the cellular landscape with new optical probes, imaging strategies and technical innovations

Wednesday 23.10.13 | 10.00–11.00 h
Interimshörsaal, Haus 61, Sandhöferallee
Medical Campus Niederrad

NEW HORIZON LECTURE

Mitochondria, metabolism and cell cycle control: an imaging perspective

Wednesday 23.10.13 | 17:30 – 19:00 h
Paul-Ehrlich Lecture Hall, Haus 22, Theodor-Stern-Kai 7
Medical Campus Niederrad

Prof. Dr. Jennifer Lippincott-Schwartz

NIH Bethesda

