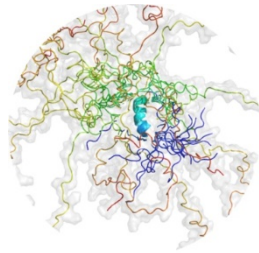


**GRK  
2467**



**DFG**



MARTIN-LUTHER-UNIVERSITÄT  
HALLE-WITTENBERG

## **11 PhD Student Positions available at the Martin Luther University Halle-Wittenberg in a DFG-Funded Research Training Group**

**External Job Announcement Reg.No: 5-883/22-D**

At the Martin Luther University Halle-Wittenberg, we are offering from June 1, 2022

**11 job positions as a scientist with PhD qualification (m-f-d)**

based on a part-time contract (65 %).

Salary is based on the German civil service pay scale (TV-L) and depends on the individual qualification and experience up to salary group 13 TV-L.

The interdisciplinary, DFG-funded graduate training program (Research Training Group) RTG 2467 entitled "Intrinsically Disordered Proteins – Molecular Principles, Cellular Functions, and Diseases" will focus on investigating how intrinsically disordered proteins (IDPs), or intrinsically disordered regions (IDRs) in proteins, fulfil their biological functions via interactions with binding proteins or RNA. Projects funded by the program will employ a broad spectrum of methods and techniques, ranging from biophysics to cell biology. The RTG will provide a comprehensive education in an international and scientifically stimulating research environment. Further information can be obtained at [www.rtg2467.uni-halle.de](http://www.rtg2467.uni-halle.de).

### **Tasks:**

- Application of techniques in cell biology, molecular biology, biochemistry, and biophysics
- Characterization of intrinsically disordered proteins at the molecular and cellular level
- Writing of SOPs to analyse intrinsically disordered proteins and writing of scientific publications

### **Required qualifications:**

- Diploma/Master degree in biochemistry, biophysics, biology biotech or any related discipline
- Excellent English communication and writing skills

Applicants should apply until February 28, 2022 using online form provided at [www.rtg2467.uni-halle.de](http://www.rtg2467.uni-halle.de) and indicate their preference for three specific projects (except project 7) with priorities first,

second and third. The form can also be submitted as an email attachment to [rtg2467@pharmazie.uni-halle.de](mailto:rtg2467@pharmazie.uni-halle.de)

Applications of disabled candidates with equivalent qualifications will be given priority. Women are particularly encouraged to apply.

Applicants with a foreign qualification have to show the statement of comparability for foreign higher education qualifications issued by Central Office for Foreign Education|Zentralstelle für ausländisches Bildungswesen (<https://www.kmk.org/zab/central-office-for-foreign-education>).

Further questions can be addressed to Claudia Spielmann [claudia.spielmann@pharmazie.uni-halle.de](mailto:claudia.spielmann@pharmazie.uni-halle.de), tel. 03455525171 and Prof. Dr. Andrea Sinz [andrea.sinz@pharmazie.uni-halle.de](mailto:andrea.sinz@pharmazie.uni-halle.de)

The tender is subject to any budgetary restrictions.

Application expenses cannot be refunded by Martin Luther University Halle-Wittenberg. Application documents can only be returned if a sufficiently stamped envelope will be included.